

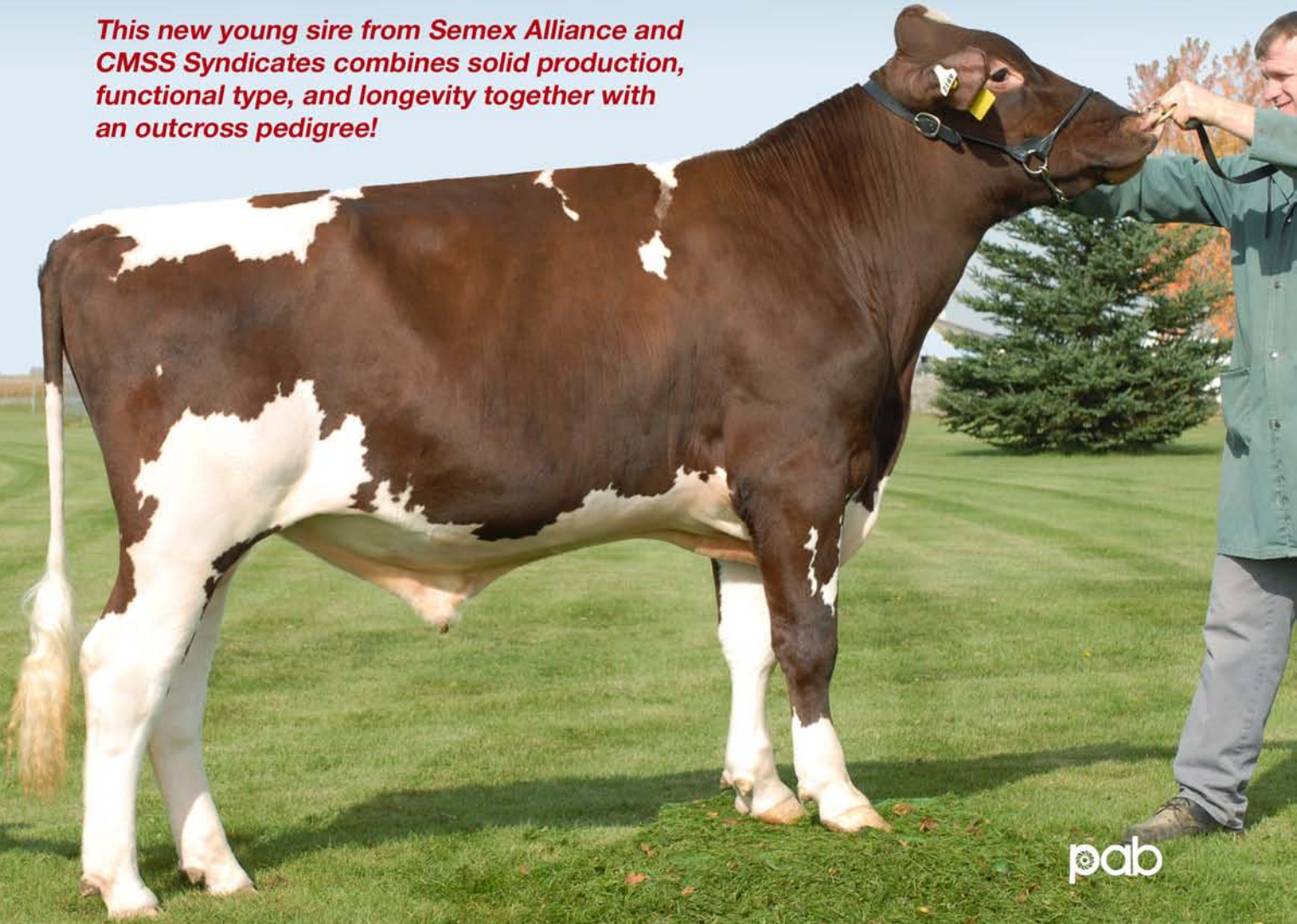


Semex has a "Diamond Jack" to fill out your hand...

OCEANBRAE DIAMOND JACK

200MS0401 POD x Peri's Champ x Oceanbrae David aAa: 432516

This new young sire from Semex Alliance and CMSS Syndicates combines solid production, functional type, and longevity together with an outcross pedigree!



His dam: Oceanbrae Joe 36th EX-91-4E (CAN)

Sired by Kingsdale Peri's Champ (Pacesetter x Peri 37th)

5-7 305d. 9734 kg M 389 F 4.0% 300 P 3.1% BCA: 304-304-286

6-9 305d. 9591 kg M 361 F 3.8% 295 P 3.1% BCA: 294-288-278

7-8 305d. 11059 kg M 427 F 3.9% 347 P 3.1% BCA: 338-331-324

7 lactations lifetime: 66,964 M 2534 F 2139 P

4 of 5 dams behind Diamond Jack are VG or EX!

"Diamond Jack" features the red hot Prince of Diamonds crossed on one of the deepest cow families in Canada.



Milner, BC
(604) 530-1141



Guelph, ON
(519) 821-2150



Kemptville, ON
(613) 258-5944



Saint-Hyacinthe, QC
(450) 774-1141



130 Stone Rd. West, Guelph, ON N1G 3Z2
Tel: (519) 821-5060 Fax: (519) 821-7225
info@semex.com www.semex.com

OFFICIAL EXTENDED PEDIGREE / GÉNÉALOGIE OFFICIELLE

OCEANBRAE DIAMOND JACK

MSCANM7592189

Born/Né: 14-06-2006

ET Purity/Pureté: 91%

Tattoo/Tatouage:

INB/CON: 2.77% R-Value/Valeur P:4.82%



BREEDER/ÉLEVEUR: FRED BARRETT, MISCOUCHE, PE
OWNER/PROPRIÉTAIRE: FRED BARRETT, MISCOUCHE, PE

INNISFAIL PRINCE OF DIAMONDS

MSCANM10036638

Born/Né: 13-05-2003

No Canadian proof information

WILDWOOD CASS DIAMOND

MSUSAM435362

USA proof (Aug 07): +723M +34F +0.05% +16P -0.04%
 2.86 SCS 0.8 Prod. Life

TOWN VIEW CASSIUS

MSUSAM429648

Born/Né: 12-09-1989

WIL-LOU LUKE'S DIANE

MSUSAF425882

Born/Née: 23-05-1990

INNISFAIL RB PRINCESS 771

MSUSAF442115

Born/Née: 22-07-1997

3-8 330d. 8059M 3.5%F 3.1%P
 4-8 339d. 8364M 3.5%F 3.2%P
 5-9 365d. 9891M 3.5%F 3.1%P
 records completed in the USA

Reserve Senior Champion, World Dairy Expo 2002

PINEHURST REBEL 9TH

MSUSAM423595

INNISFAIL RB PRINCESS 187-EXP

MSUSAF428202

Born/Née: 08-12-1991

8-0 305d. 8559M 3.8%F 3.2%P

OCEANBRAE JOE 36TH EX-91-4E(8-3)-CAN

MSCANF669676

Born/Née: 04-04-1997

(07/08) **LPI/IPV: 575** I/C: 0.51% R/P:4.65%

CAN-EBV Rel/Fiab:66% M/L:4 F/G:0 P:-1

(07/08) SCS/CS:2.70 %F/G:-0.02 %P:-0.04

CAN-EBV Rel/Fiab:36% CONF:5

(07/08) MS/SM: 5 FL/PM: 2 DS/PL: 1 RP/C: -2

2-5 305 7467 278 3.7 251 3.4 295 270 302

3-7 305 9109 321 3.5 293 3.2 313 274 308

4-8 305 8996 337 3.7 293 3.3 287 270 287

5-7 305 9734 389 4.0 300 3.1 304 304 286

6-9 305 9591 361 3.8 295 3.1 294 280 278

7-8 305 11059 427 3.9 347 3.1 338 331 324

Total: 7 66964 2534 3.8% 2139 3.2% 306 290 298

CANADIAN CLASS LEADER - MATURE COW 2005

DIAMOND MEDAL (50,000+ KG MILK) - 2005

DREYMAUR AWARD - HIGHEST 3 YEAR AVE. MILK 2005

HIGHEST KG MILK, FAT, PROTEIN IN CANADA 2005

KINGSDALE PERI'S CHAMP

MSCANM458187

Born/Né: 28-05-1986

(07/08) **LPI/IPV: 184** I/C: 3.12% R/P:5.74%

CAN-EBV Rel/Fiab:83% M/L:-415 F/G:-21 P:-9

(07/08) SCS/CS:2.82 DF/FF:72 %F/G:-0.08 %P:+0.07

CAN-EBV Rel/Fiab:61% CONF:2 HL/DV:3.19

(07/08) MS/SM: 9 FL/PM: 0 DS/PL: -7 RP/C: -2

Classified Daus/Filles Classifiées: 27 %GP/%BP: 81%

3 EX 7 VG/TB 12 GP/BP 5 G/B 0 F/P

KORNCREST PACESETTER

MSCANM461766

Born/Né: 25-10-1974

(07/08) **LPI/IPV: 229** I/C: R/P:

CAN-EBV/VÉE M/L:-94 F/G:-1 +0.05% P:-3 +0.00%

CAN-EBV/VÉE CONF:-2 MS/SM:3 FL/PM:0 SCS/CS: 2.93

KINGSDALE PERI 37TH

MSUSAF395265

Born/Née: 03-08-1981

OCEANBRAE JOE DEE GP-82(3-8)-CAN

MSCANF662448

Born/Née: 11-10-1993

(07/08) **LPI/IPV: -55** I/C: 3.27% R/P:3.15%

CAN-EBV Rel/Fiab:60% M/L:-152 F/G:-7 P:-7

(07/08) SCS/CS:2.64 %F/G:-0.03 %P:-0.10

CAN-EBV Rel/Fiab:33% CONF:-1

(07/08) MS/SM: -1 FL/PM: 1 DS/PL: -1 RP/C: -7

2-5 305 4784 169 3.5 158 3.3 194 169 198

Total: 2 9671 344 3.6% 314 3.2% 194 169 198

SOLD DURING 2ND LACTATION

OCEANBRAE DAVID

MSCANM462446

Born/Né: 03-04-1991

OCEANBRAE BESSIE JOE 18TH VG-85

MSCANF653476

Born/Née: 03-05-1989

8-4 305 8954 302 3.4 283 3.2 285 241 277

Total: 6 46325 1599 3.5% 1490 3.2% 241 208 236

Quantities in kg / Quantités en kg

Canadian Milking Shorthorn Society – printed Sept 3, 2007